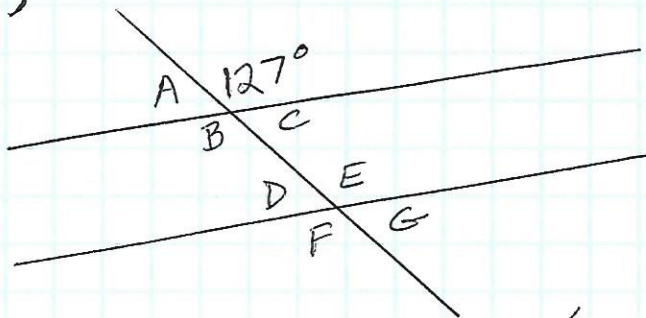


Name _____ Pd _____

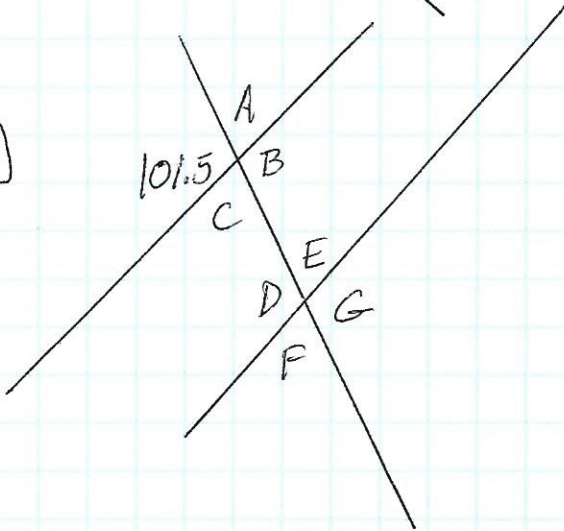
Angle Angle Mo Mangle, Fee Fi Fo Fangle ...
Complete the missing angle measurements ...

1)



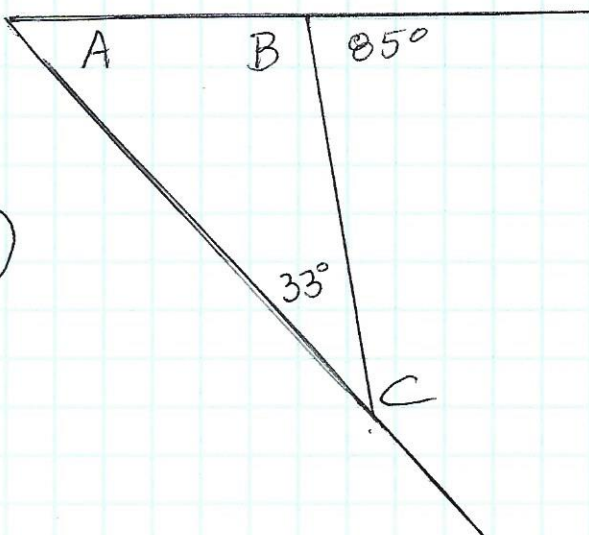
A.
B.
C.
D.
E.
F.
G.

2)



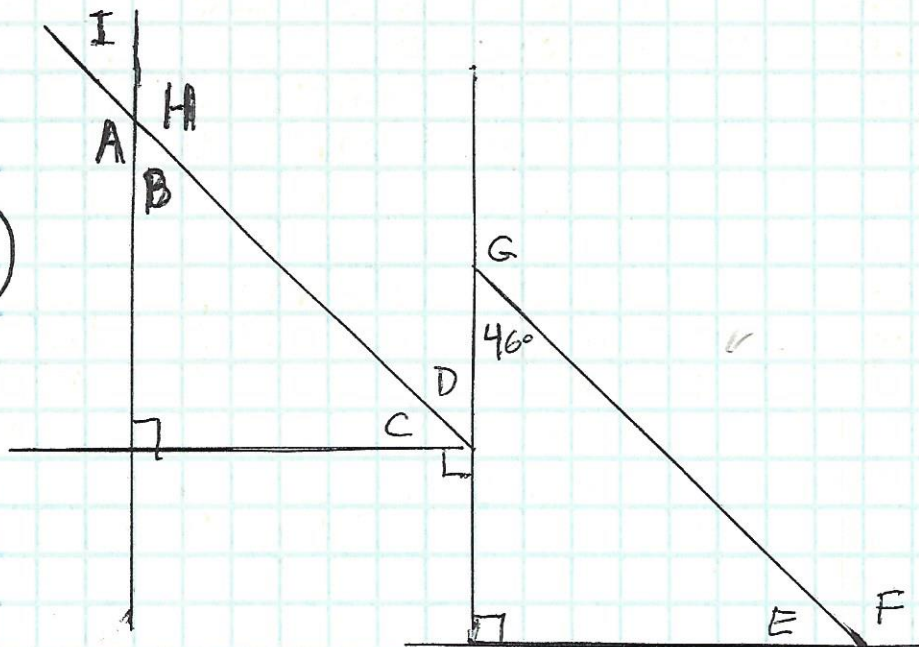
A.
B.
C.
D.
E.
F.
G.

3)



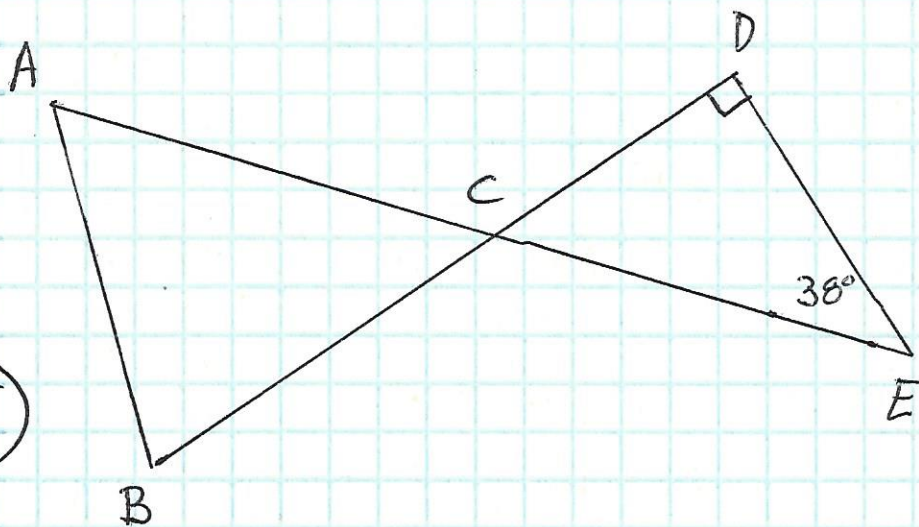
A.
B.
C.

4)



A,
B,
C,
D,
E,
F,
G,
H,
I.

5)



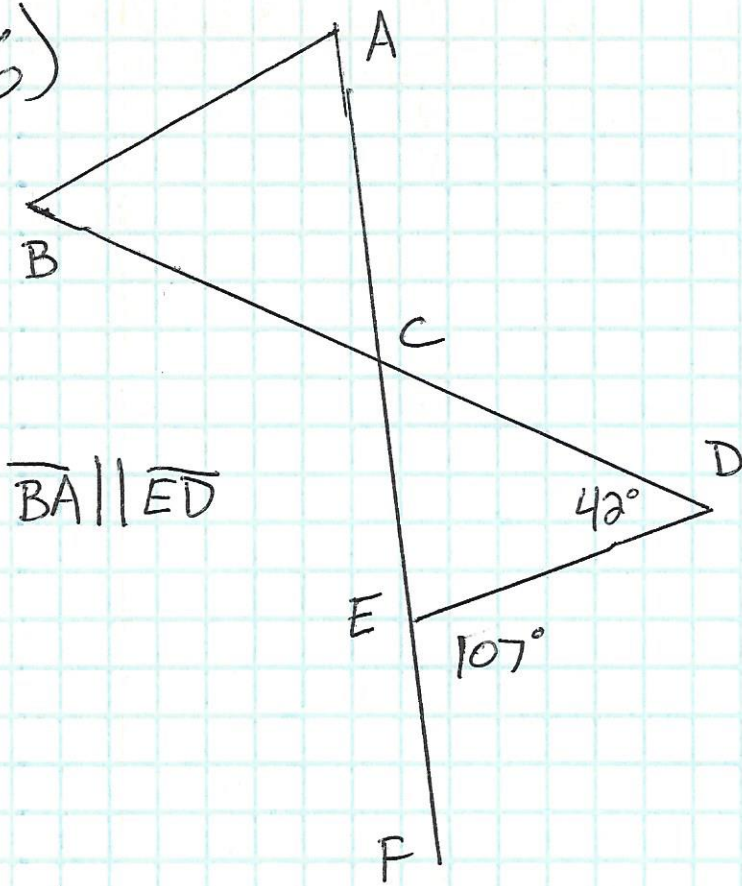
$\angle DCE$:
 $\angle DCA$:
 $\angle BCE$:
 $\angle ACB$:

Do we have enough information to figure out the measure of $\angle ABC$?

Do we have enough information to figure out the measure of $\angle BAC$?

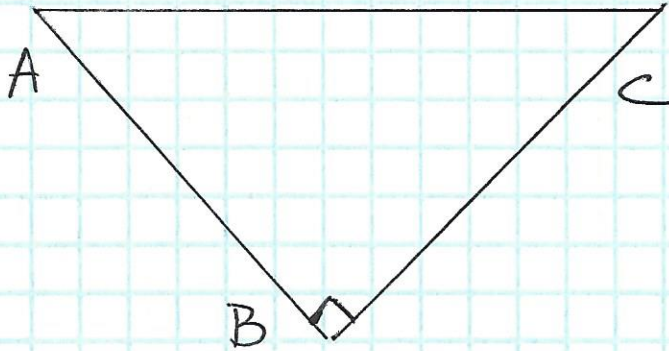
What can you determine about the sum of the measures of $\angle ABC$ and $\angle BAC$?

6)



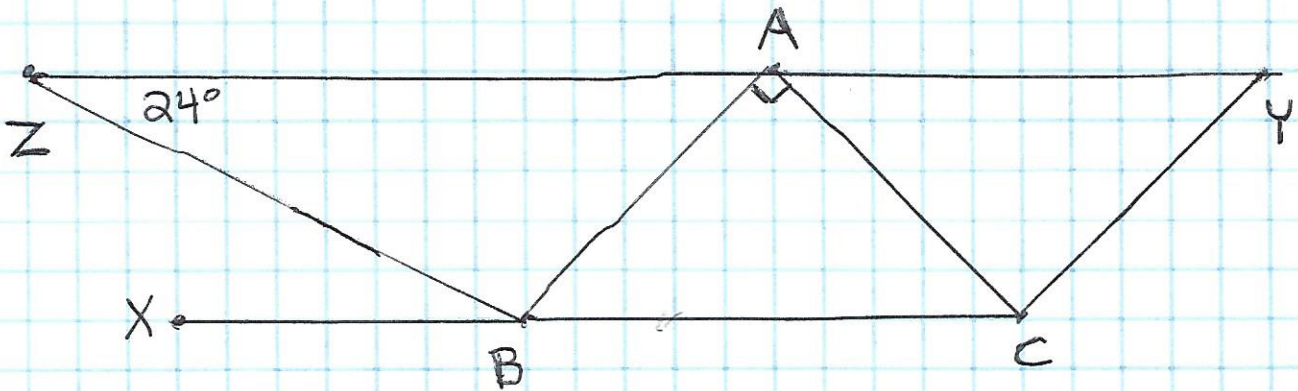
- $\angle CED$:
- $\angle DCE$:
- $\angle ACD$:
- $\angle BCE$:
- $\angle BCA$:
- $\angle BAC$:
- $\angle ABC$:

7)



$\triangle ABC$ is an isosceles right triangle. What are the angle measures of $\angle CAB$ and $\angle ACB$?

8)

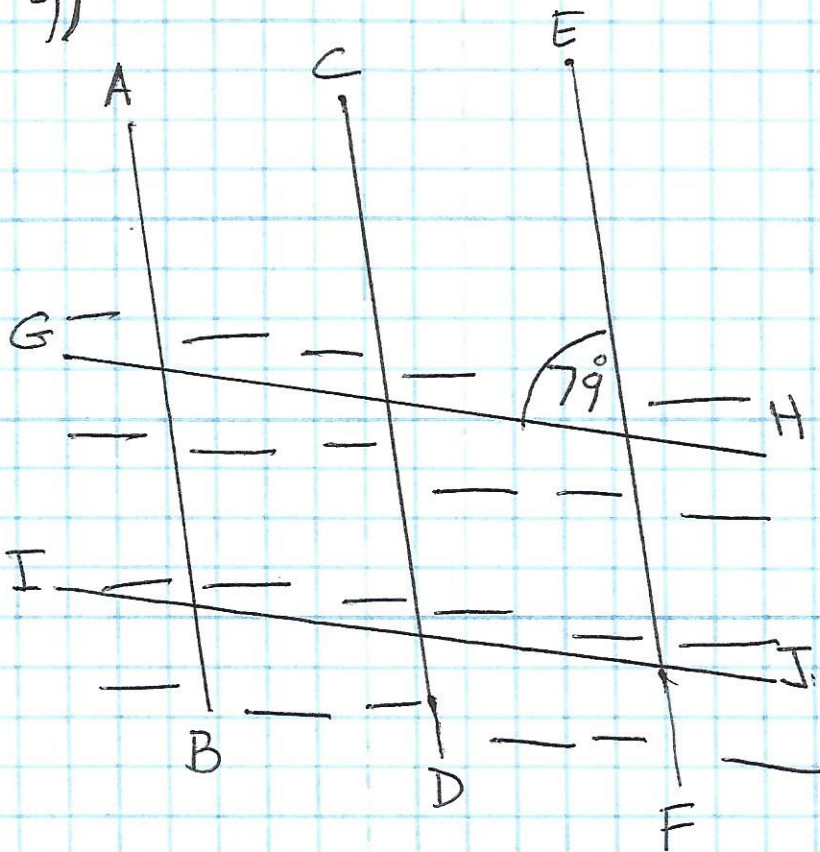


$\triangle ABC$ is an isosceles right triangle.
 $\overline{AB} \parallel \overline{CY}$. Complete the missing angle measurements

- $\angle ABC$:
- $\angle ACB$:
- $\angle ACY$:
- $\angle CAZ$:

- $\angle CYA$:
- $\angle BAZ$:
- $\angle ABZ$:
- $\angle ZBX$:

9)



Lines \overline{AB} , \overline{CD} , & \overline{EF} are parallel to one another.
 Lines \overline{GH} & \overline{IJ} are parallel to each other.

On the drawing to the left, fill in all the missing angle measures.