

Name _____ Sect _____

Angles & Lines Review - 8th Grade

An angle measuring 90° is called a _____ angle.

An angle measuring $< 90^\circ$ is a _____ angle.

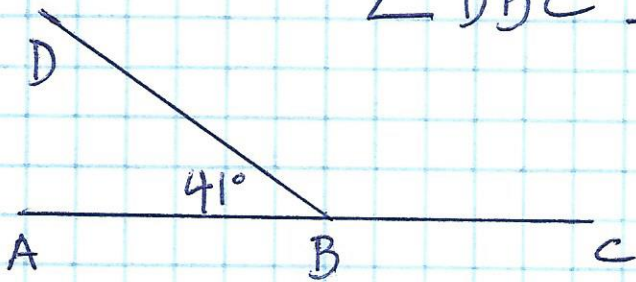
An angle measuring $> 90^\circ$ is a _____ angle.

Angles that add up to 90° are _____ angles.

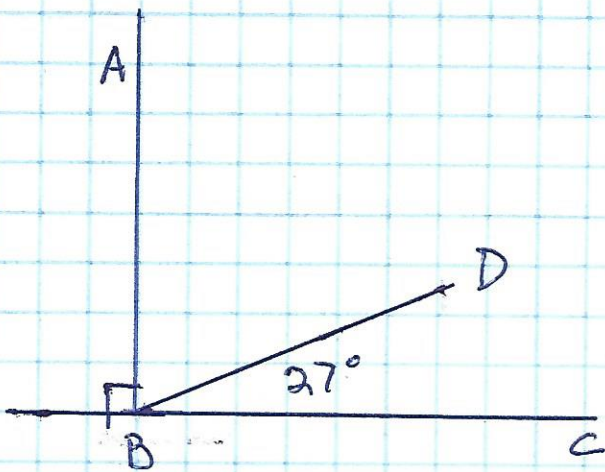
Angles that add up to 180° are _____ angles.

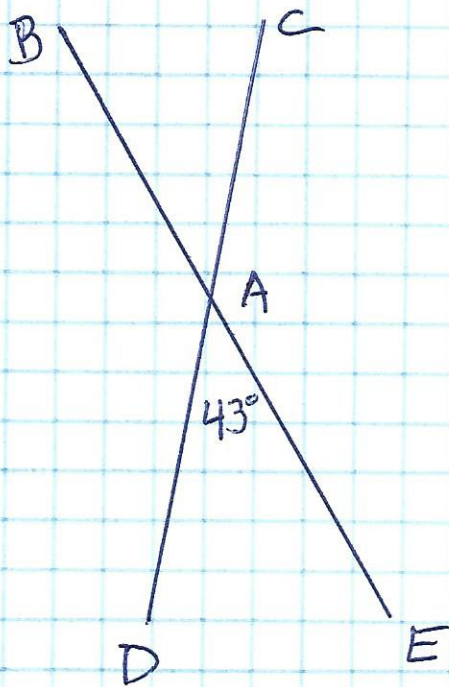
Identify the measures of the indicated angles

$\angle DBC$ _____



$\angle ABD$ _____





$\angle BAD$ _____

$\angle BAC$ _____

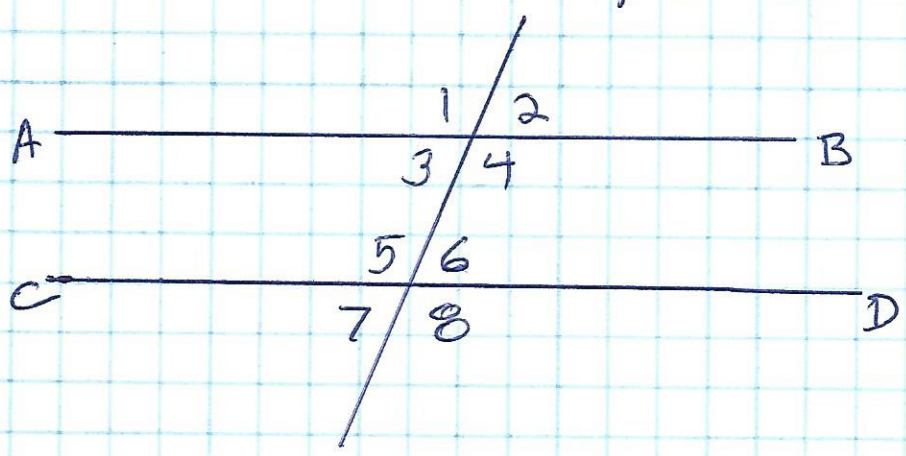
Identify pairs of the following types of angles. $\overline{AB} \parallel \overline{CD}$.

Corresponding angles _____ & _____

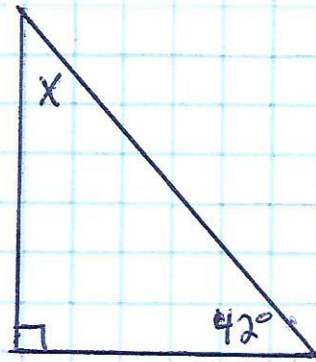
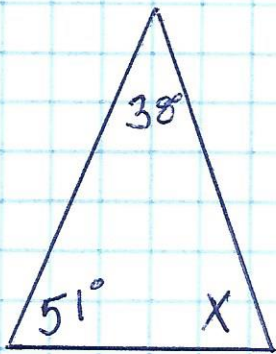
Vertical angles _____ & _____

Alternate interior angles _____ & _____

Alternate exterior angles _____ & _____

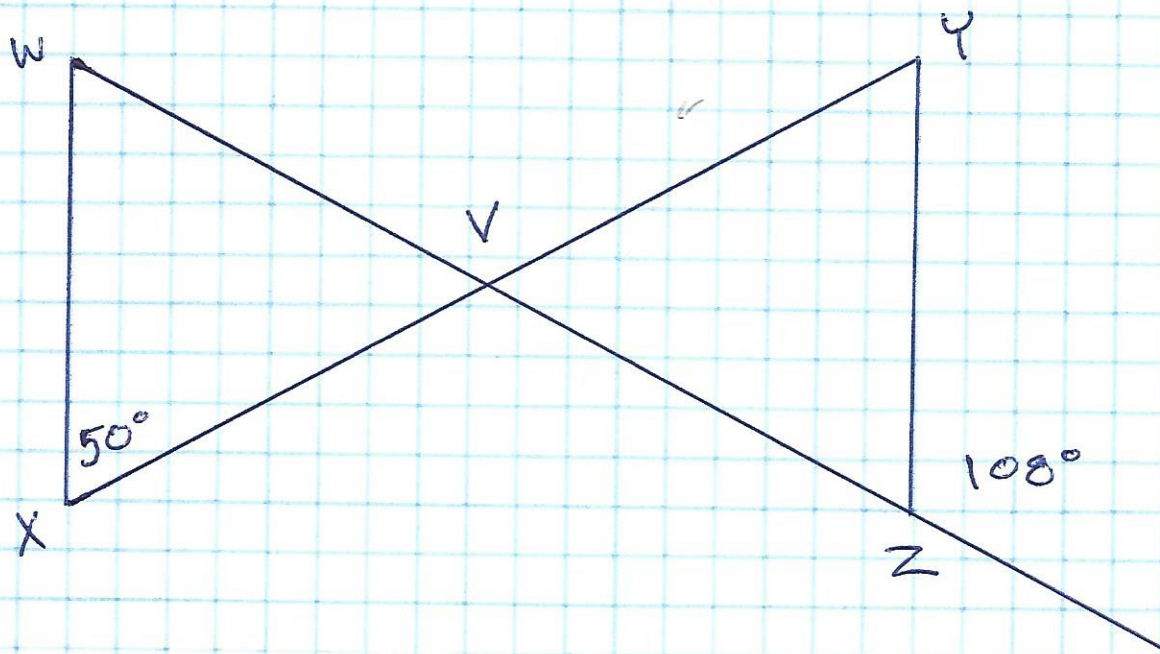


Complete the missing angle measures.



The first angle of a triangle is half the measure of the second angle. The third angle measures three times the second angle. Calculate the values of all three angles.

Calculate the values of the missing angles. $\overline{WX} \parallel \overline{YZ}$



- $\angle VZY$ _____
- $\angle VYZ$ _____
- $\angle YVZ$ _____
- $\angle WVX$ _____
- $\angle WVY$ _____
- $\angle XWV$ _____