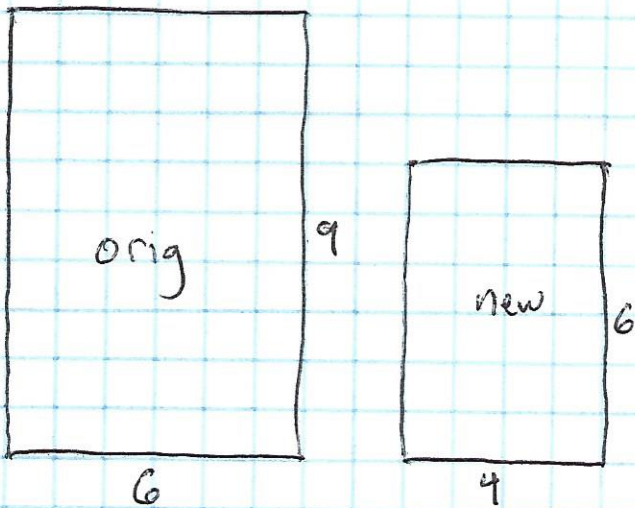


Name _____

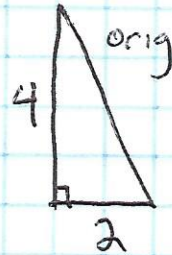
Sect _____

Dilations Review:

Identify the scale factor of the following dilations

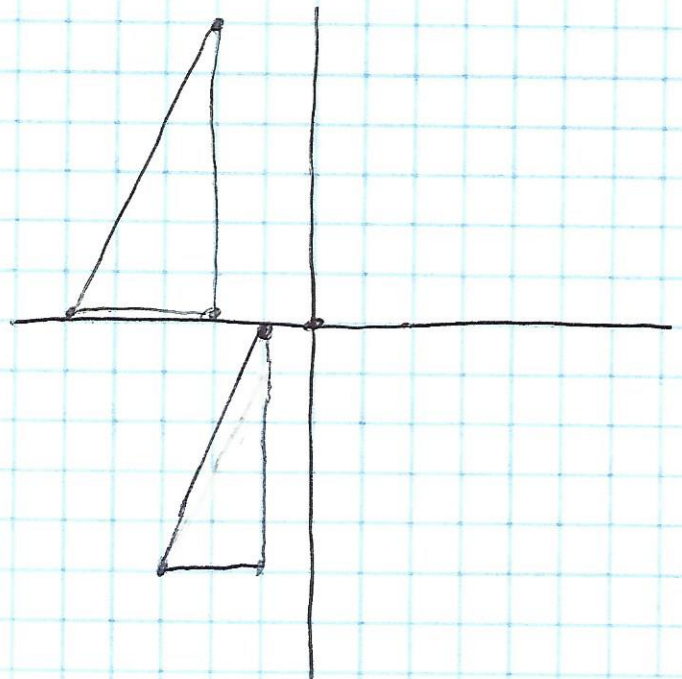
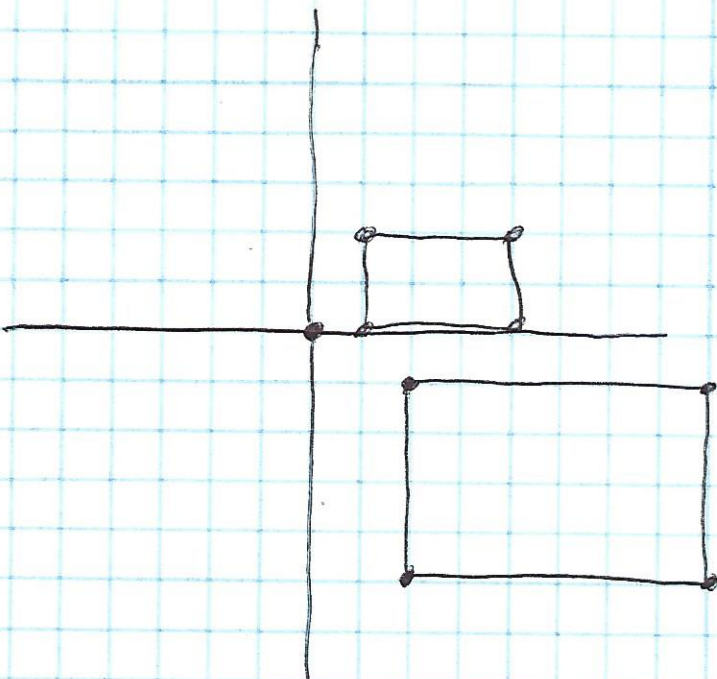


Scale factor _____



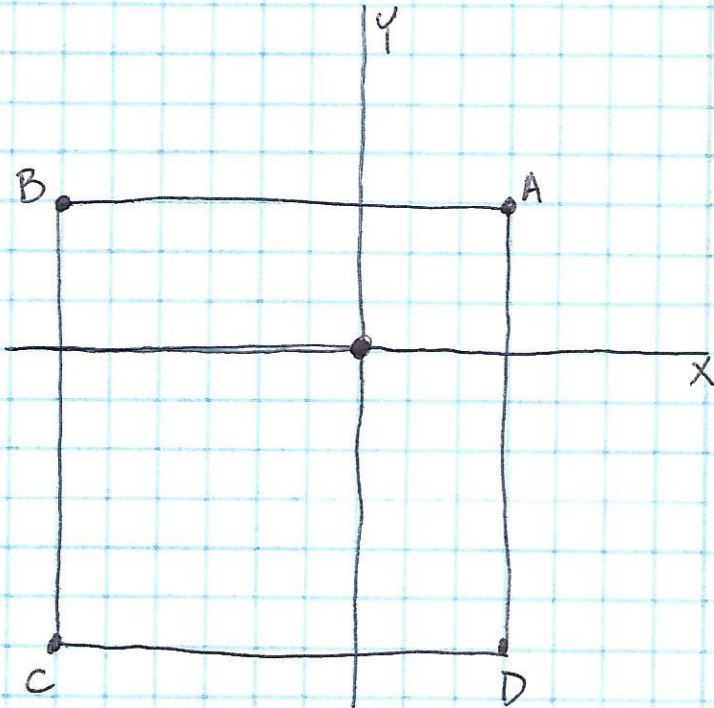
Scale factor _____

Tell whether each transformation is a dilation:



Review Ctd:

Apply the given scale factor to the figure shown, and list the new coordinates of the dilated figure:



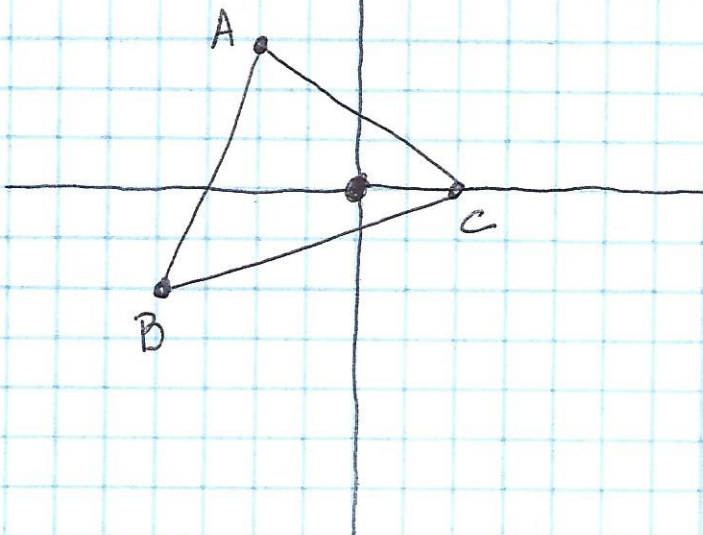
Scale factor: $\frac{2}{3}$

Pt A':

Pt B':

Pt C':

Pt D':



Scale factor: 2

Pt A':

Pt B':

Pt C':